



Engine	Cummins 6LTAA9.3
Rated Power	162 kW (217 hp / 220 ps) @ 2,200 rpm
Net Power	162 kW (217 hp / 220 ps) @ 2,200 rpm
Operating Weight	17,900 kg
Standard Bucket Size	3.5 m ³
Standard Breakout Force	180.7 kN
Standard Dump Clearance	2,978 mm

856H MAX WHEEL LOADER

ENGINE

Emission Regulation	Tier 2 / Stage II
Make	Cummins
Model	6LTAA9.3
Rated Power	162 kW (217 hp / 220 ps) @ 2,200 rpm
Net Power	162 kW (217 hp / 220 ps) @ 2,200 rpm
Peak Torque	940 N-m @ 1,400 rpm
Displacement	9.3 L
Number of Cylinder	6
Aspiration	Turbocharged & Air-to-air intercooled

TRANSMISSION

Transmission Type	Electric proportional, power shift
Torque Converter	Single stage, three elements
Maximum Travel Speed, fwd	37 km/h
Maximum Travel Speed, rev	24 km/h
Number of Speed, fwd	4
Number of Speed, Rev	3

AXLES

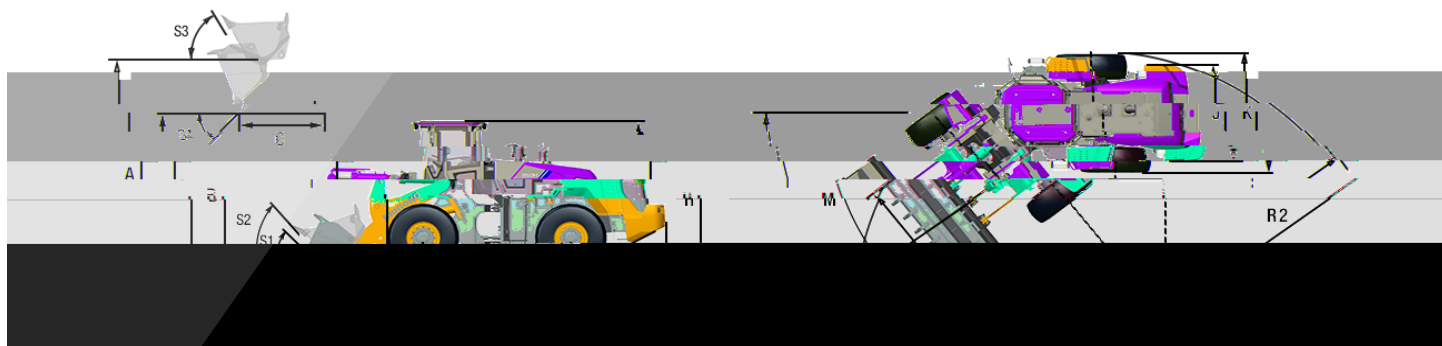
Differential Front Type	Limited slip
Differential Rear Type	Limited slip
Axle Oscillation	$\pm 10^\circ$

STEERING

Steering Configuration	Articulated
Steering Relief Pressure	20.7 MPa

BRAKES

Service Brake Type	Wet discs brake
Service Brake Actuation	Hydraulic
Parking Brake Type	Drum
Parking Brake Actuation	



Guangxi Liugong Machinery Co., Ltd.

No. 1 Liutai Road, Liuzhou, Guangxi 545007, PR China

T: +86 772 3886124

E: overseas@liugong.com

www.liugong.com

Specifications and designs are subject to change without notice. Machines shown may include optional equipment. Liugong standard and optional equipment may vary from region to region. Please consult your Liugong dealer for information specific to your area. Engine power kW is converted to horsepower (1 kW=1.3596 ps and 1 kW=1.3410 hp) in this file.